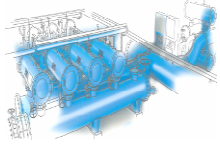


FMA 10000 DATA SHEET



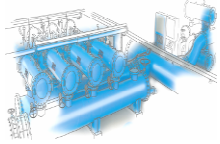
MODEL	10210	10310	10410	10212	10312	10412	10214	10314	10414
GENERAL DATA									
Inlet/Outlet diameter ⁽¹⁾	DN-450 (18")	DN-500 (20")	DN-600 (24")	DN-500 (20")	DN-600 (24")	DN-700 (28")	DN-624 (24")	DN-700 (28")	DN-800 (32")
Maximum/minimum working pressure	2 bar / 10 bar (If others ask Stf-Filtros)								
Fluid maximum temperature	50 °C (Up to 95 °C on demand)								
STAINLESS STEEL SCREEN DATA									
Maximum flow rate (m ³ /h)	2.300	3.450	4.600	2.800	4.200	5.600	3.600	5.400	7.200
Gross filtering surface (cm ²)	26.420	39.630	52.840	33.000	49.500	66.000	42.600	63.900	85.200
Net filtering surface (cm ²)	23.800	35.700	47.600	29.400	44.100	58.800	38.300	57.450	76.600
Filtration degrees	1000, 500, 300, 200, 125, 100, 80, 50, 25, 20, 10 microns								
BACKWASHING DATA									
Backwashing valve	DN-50 (2") flange								
Number of valves	2 Uds.	3 Uds.	4 Uds.	2 Uds.	3 Uds.	4 Uds.	2 Uds.	3 uds.	4 uds.
Backwash cycle time	25 seconds								
Backwashing flow rate (m ³ /h)	50	75	100	40	60	80	50	75	100



FMA 10000 DATA SHEET



Backwashing water consumption (litres)	350	525	700	280	420	560	175	525	700
ELECTRICAL DATA									
Supply voltage	220 V AC 50 Hz Single-phase (Optional 400 V AC Three-phase)								
Control voltage	24 V DC								
Installed power	0,74 Kw	1,11 Kw	1,48 Kw	0,74 Kw	1,11 Kw	1,48 Kw	0,74 Kw	1,11 Kw	1,48 Kw
Electric motor consumption	2,8 A	4,2 A	5,6 A	2,8 A	4,2 A	5,6 A	2,8 A	4,2 A	5,6 A
STANDARD MATERIALS									
Filter housing and lids	S-235-JR carbon steel								
Finish treatment	Epoxy internal coating with no solvents, external primer, intermediate and finish								
Suction scanner	AISI-304 stainless steel								
Filtering screen	AISI-316 stainless steel								
Suction nozzles	PVC with AISI 316 stainless steel ring and nylon brushes								
Backwashing valves	Cast steel with polyester coating								
Joints and bolts	Bichromate quality 5.6 and 5.8								
Joints	NBR – EPDM - Viton								
SPECIAL MATERIALS (OPTIONAL)									
Filter housing and lids	A-516 carbon steel								



FMA 10000 DATA SHEET



Finish treatment	Inside coating suitable for sea water and external coating suitable for sea environment
Suction scanner	Duplex or Superduplex stainless steel
Filtering screen	Avesta 254 SMO stainless steel
Suction nozzles	Duplex or Superduplex stainless steel and nylon brushes
Backwashing valves	Hydraulic, electric or pneumatic drive. "Ask STF-Filtros for different options regarding materials"
Joints and bolts	A2 or A4 stainless steel
Joints	Ask STF-Filtros