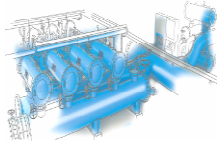


FMA 5000 DATA SHEET



MODEL	5020	
GENERAL DATA		
Inlet/Outlet diameter ⁽¹⁾	DN-500 (20")	
Maximum/minimum working pressure	2 bar / 10 bar (If others ask Stf-Filtros)	
Fluid maximum temperature	50 °C (Up to 95 °C on demand)	
STAINLESS STEEL SCREEN DATA	50 microns	25 microns
Maximum flow rate (m ³ /h)	2.000	1.800
Gross filtering surface (cm ²)	55.000	55.000
Net filtering surface (cm ²)	51.000	51.000
Unladen weight (kg)	1.810 Kg.	
Filtration degrees	50, 25, 20, 10 microns	
BACKWASHING DATA		
Backwashing valve	DN-80 (3") flange	
Backwash cycle time	33 seconds	
Backwashing flow rate (m ³ /h)	80	
Backwashing water consumption (litres)	730	



FMA 5000 DATA SHEET



ELECTRICAL DATA

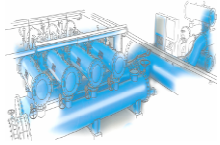
Supply voltage	220 V AC 50 Hz Single-phase (Optional 400 V AC Three-phase)
Control voltage	24 V DC
Electric motor power	0,75 kW
Electric motor consumption	3 A

STANDARD MATERIALS

Filter housing and lids	S-235-JR carbon steel
Finish treatment	Kiln Polymerized epoxy-polyester powder coating
Suction scanner	AISI-304 stainless steel
Filtration screens	AISI-316 stainless steel
Suction nozzles	PVC with AISI 316 stainless steel ring and nylon brushes
Backwashing valves	Cast steel with polyester coating
Joints and bolts	Bichromate quality 5.6 and 5.8
Joints	NBR – EPDM - Viton

SPECIAL MATERIALS (OPTIONAL)

Filter housing and lids	A-516 carbon steel
Finish treatment	Inside coating suitable for sea water and external coating suitable for sea environment
Suction scanner	Duplex or Superduplex stainless steel



FMA 5000 DATA SHEET



Filtration screen	Avesta 254 SMO stainless steel
Suction nozzles	Duplex or Superduplex stainless steel and nylon brushes
Backwashing valves	Hydraulic, electric or pneumatic drive. "Ask STF-Filtros for different options regarding materials"
Joints and bolts	A2 or A4 stainless steel
Joints	Ask STF-Filtros

NOTES:

(1) It is possible to manufacture the inlet and the outlet with other diameters. Ask STF-Filtros for availability.