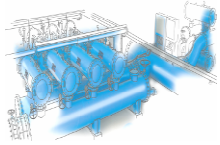


FMA 1000 DATA SHEET



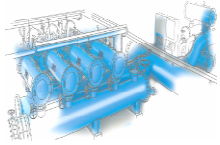
MODEL	1002	1003	1004	1006
GENERAL DATA				
Inlet/Outlet diameter ⁽¹⁾	DN-50 (2")	DN-80 (3")	DN-100 (4")	DN-150 (6")
Maximum/minimum working pressure	2 bar / 10 bar			
Fluid maximum temperature	50 °C			
PVC SCREEN DATA				
Maximum flow rate (m ³ /h)	50	90	150	280
Gross filtering surface (cm ²)	910	1.600	2.400	4.800
Net filtering surface (cm ²)	460	1.000	1.600	3.200
Unladen weight (kg)	35	45	60	81
Filtration degrees	1.000, 500, 300, 200, 125, 100 microns			
STAINLESS STEEL SCREEN				
Maximum flow (m ³ /h)	50	90	150	280
Gross filtering surface (cm ²)	1.000	1.760	2.650	5.300
Net filtering surface (cm ²)	711	1.400	2.200	4.390
Unladen weight (kg)	36	48	65	88



FMA 1000 DATA SHEET



Filtration degree	1.000, 500, 300, 200, 125, 100 microns			
BACKWASHING DATA				
Backwashing valve	Thread G-1"			
Backwash cycle time	4-13 seconds	15-20 seconds		
Backwashing flow (m ³ /h)	2,4	3	3	9
Backwashing water consumption (litres)	5	12,5	12,5	53
ELECTRICAL DATA				
Rated operation voltage	4 batteries 1.5 V LR 14-C / (optional 220 V AC 50 Hz)			
Control voltage	6 V DC / (24 V DC if option 220 V AC)			
STANDARD MATERIALS				
Filter housing and lids	S-235-JR carbon steel			
Finish treatment	Kiln Polymerized epoxy-polyester powder coating			
Suction scanner	AISI-304 stainless steel			
Filtration screens	AISI-316 stainless steel			
Suction nozzles	PVC with AISI 316 stainless steel ring and nylon brushes			
Backwashing valves	Polypropylene			
Separator disk	Aluminium			



FMA 1000 DATA SHEET



Joints and bolts	A2 stainless steel
Joints	NBR – EPDM - Viton
SPECIAL MATERIALS (OPTIONAL)	
Filter housing and lids	A-516 carbon steel / AISI 304 stainless steel / AISI 316 / SuperDuplex
Finish treatment	Inside coating suitable for sea water and external coating suitable for sea environment.
Suction scanner	Duplex or Superduplex stainless steel
Filtration screen	Avesta 254 SMO stainless steel
Suction nozzles	Duplex or Superduplex stainless steel and nylon brushes
Backwashing valves	“Ask STF-Filtros for different options regarding materials”
Separator disk	A2 or A4 stainless steel
Joints and bolts	A4 stainless steel
Joints	Ask STF-Filtros

NOTES:

(1) It is possible to manufacture the inlet and the outlet with other diameters. Ask STF-Filtros for availability.