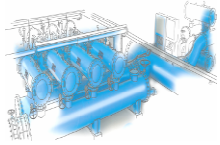


FMA 9000 DATA SHEET



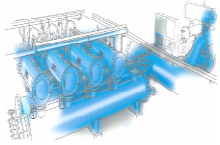
MODEL	9006	9008	9010	9012	9014
GENERAL DATA					
Inlet/outlet diameter ⁽¹⁾	DN-150 (6")	DN-200 (8")	DN-250 (10")	DN-300 (12")	DN-350 (14")
Maximum/minimum working pressure	2 bar / 10 bar (If others ask Stf-Filtros)				
Fluid maximum temperature	50 °C (Up to 95 °C on demand)				
PVC SCREEN DATA					
Maximum flow rate (m ³ /h)	290	450	800	920	1.250
Gross filtering surface (cm ²)	7.350	9.800	12.250	16.100	20.100
Net filtering surface (cm ²)	4.800	6.400	8.000	10.300	12.800
Unladen weight (kg)	270	316	340	470	525
Filtration degrees	1.000, 500, 300, 200, 125,100 microns				
STAINLESS STEEL SCREEN DATA					
Maximum flow rate (m ³ /h)	500	700	1.150	1.400	1.800
Gross filtering surface (cm ²)	7.990	10.600	13.210	16.500	21.300
Net filtering surface (cm ²)	6.900	9.400	11.900	14.700	19.150
Unladen weight (kg)	310	365	405	550	610



FMA 9000 DATA SHEET



Filtration degree	1.000, 500, 300, 200, 125,100, 80, 50, 25, 20 and 10 micron				
BACKWASHING DATA					
Backwashing valve	G-2" thread				
Backwash cycle time	25 seconds				
Backwashing flow rate (m ³ /h)	15	20	25	20	25
Backwashing water consumption (litres)	105	140	175	140	175
ELECTRICAL DATA					
Supply voltage	220 V AC 50 Hz Single-phase (Optionall 400 V AC Three-phase and 12 V DC)				
Control voltage	24 V DC (12 V DC supply 12 V DC)				
Electric motor power	0,37 kW (0,25 kW if option 12 V)				
Electric motor consumption	1,4 A				
STANDARD MATERIALS					
Filter housing and lids	S-235-JR carbon steel				
Finish treatment	Kiln Polymerized epoxy-polyester powder coating				
Suction scanner	AISI-304 stainless steel				
Filtration screen	AISI-316 stainless steel				
Suction nozzles	PVC with AISI 316 stainless steel ring and nylon brushes				



FMA 9000 DATA SHEET



Backwashing valves	Epoxy coating
Joints and bolts	Bichromate quality 5.6 y 5.8
Joints	NBR – EPDM - Viton
SPECIAL MATERIALS (OPTIONAL)	
Filter housing and lids	A-516 Carbon steel / AISI 304 Stainless steel / AISI 316 / SuperDuplex
Finish treatment	3 mm rubberlining inside coating and external for sea environment.
Suction scanner	Duplex or Superduplex stainless steel
Filtration screen	Avesta 254 SMO stainless steel
Suction nozzles	Duplex or Superduplex stainless steel and nylon brushes
Backwashing valves	Hydraulic, electric or pneumatic drive. "Ask STF-Filtros for different options regarding materials"
Joints and bolts	A2 or A4 Stainless steel
Joints	Ask STF-Filtros

NOTES:

(1) It is possible to manufacture the inlet and outlet with other diameters. Ask STF-Filtros for availability