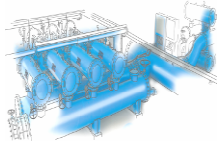


FMA 3000 DATA SHEET



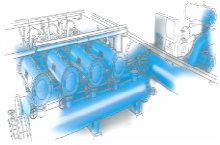
MODEL	3003	3004	3006	3008	3010
GENERAL DATA					
Inlet/Outlet diameter ⁽¹⁾	DN-80 (3")	DN-100 (4")	DN-150 (6")	DN-200 (8")	DN-250 (10")
Maximum/minimum working pressure	2 bar / 10 bar (if others ask STF-Filtros)				
Fluid maximum temperature	50 °C				
PVC SCREEN DATA					
Maximum flow rate (m ³ /h)	110	180	250	400	550
Gross filtering surface (cm ²)	2.450	4.800	7.200	9.600	12.000
Net filtering surface (cm ²)	1.600	3.200	4.800	6.400	8.000
Unladen weight (kg)	60	75	90	131	164
Filtration degrees	1.000, 500, 300, 200, 125, 100 microns				
STAINLESS STEEL SCREEN DATA					
Maximum flow rate (m ³ /h)	110	180	250	400	550
Gross filtering surface (cm ²)	2.450	4.800	7.200	9.600	12.000
Net filtering surface (cm ²)	1.600	3.200	4.800	6.400	8.000
Unladen weight (kg)	62	80	98	142	179



FMA 3000 DATA SHEET



Filtration degree	1.000, 500, 300, 200, 125, 100 microns				
BACKWASHING DATA					
Backwashing valve	Thread G-2"				
Backwash cycle time	20-40 seconds				
Backwashing flow rate (m ³ /h)	3	6,5	14	23	28
Backwashing water consumption (litres)	25	49	110	178	238
ELECTRICAL DATA					
Rated operation voltage	4 batteries 1.5 V LR 14-C / (optional 220 V AC 50 Hz)				
Control voltage	6 V DC / (24 V DC if option 220 V AC)				
STANDARD MATERIALS					
Filter housing and lids	S-235-JR carbon steel				
Finish treatment	Kiln Polymerized epoxy-polyester powder coating				
Suction scanner	AISI-304 stainless steel				
Filtration screen	AISI-316 stainless steel				
Suction nozzles	PVC with AISI 316 stainless steel ring and nylon brushes				
Backwashing valves	Polypropylene				
Joints and bolts	A2 stainless steel				



FMA 3000 DATA SHEET



Joints	NBR – EPDM - Viton
SPECIAL MATERIALS (OPTIONAL)	
Filter housing and lids	A-516 carbon steel/ AISI 304 stainless steel / AISI 316 / SuperDuplex
Finish treatment	Inside coating suitable for sea water and external coating suitable for sea environment.
Suction scanner	Duplex or Superduplex stainless steel
Filtration screen	Avesta 254 SMO stainless steel
Suction nozzles	Duplex o Superduplex stainless steel and nylon brushes
Backwashing valves	“Ask STF-Filtros for different options regarding materials”
Joints and bolts	A4 stainless steel
Joints	Ask STF-Filtros

NOTES:

(1) It is possible to manufacture the inlet and the outlet with other diameters. Ask STF-Filtros for availability.